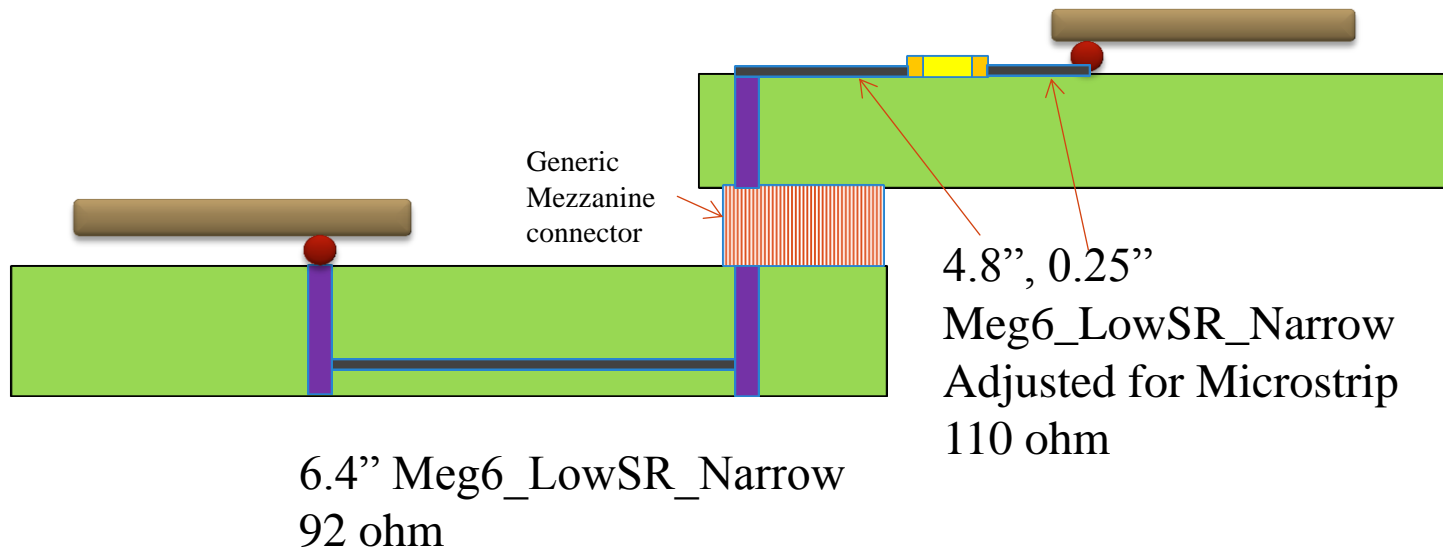


Topology Description

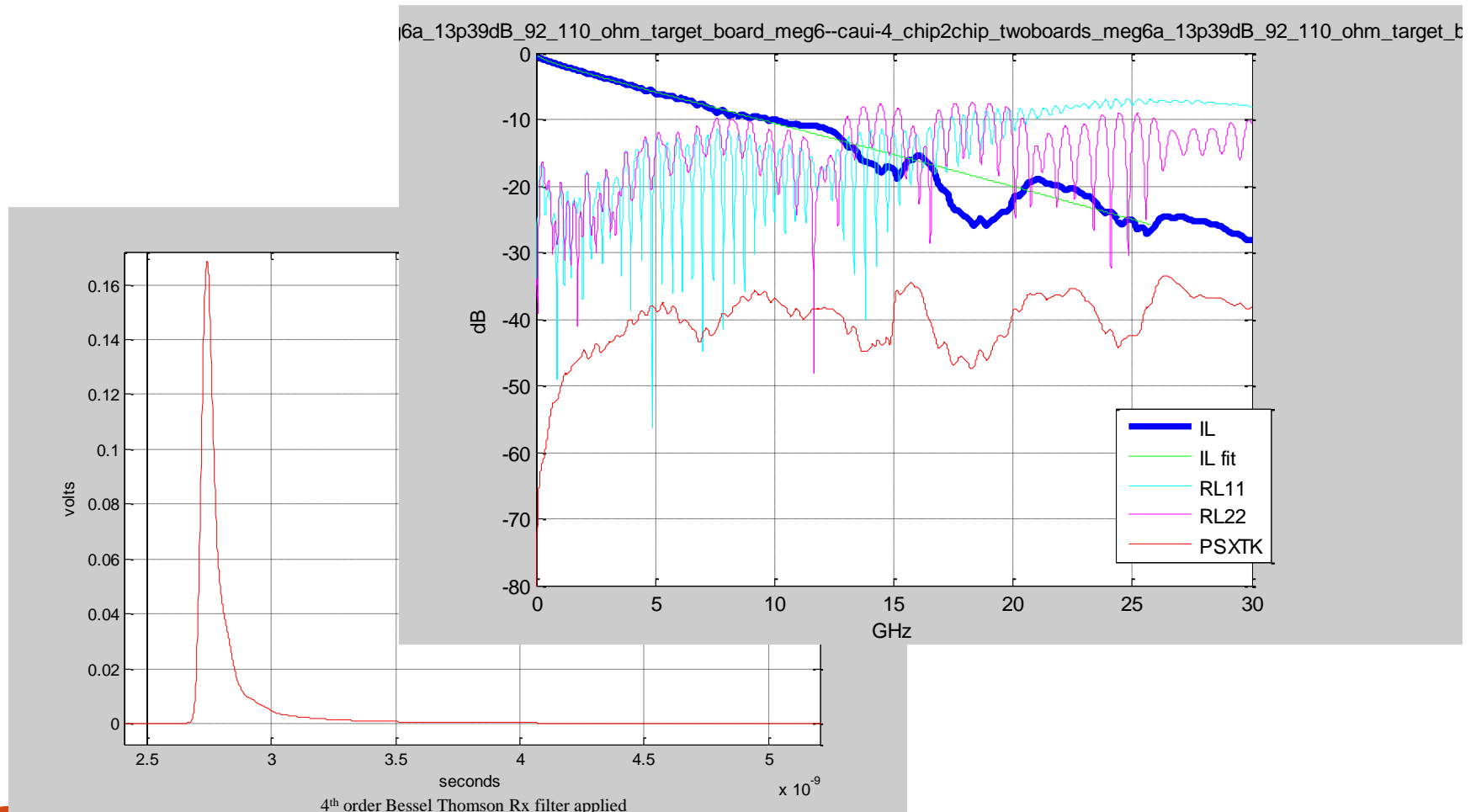
caui-4_chip2chip_twoboards_meg6a_13p39dB_92_110_ohm_target_board_meg6
13.39dB loss at 12.9GHz

Richard Mellitz
Intel Corporation
09/19/2013

CAUI-4 Mezzanine Topology

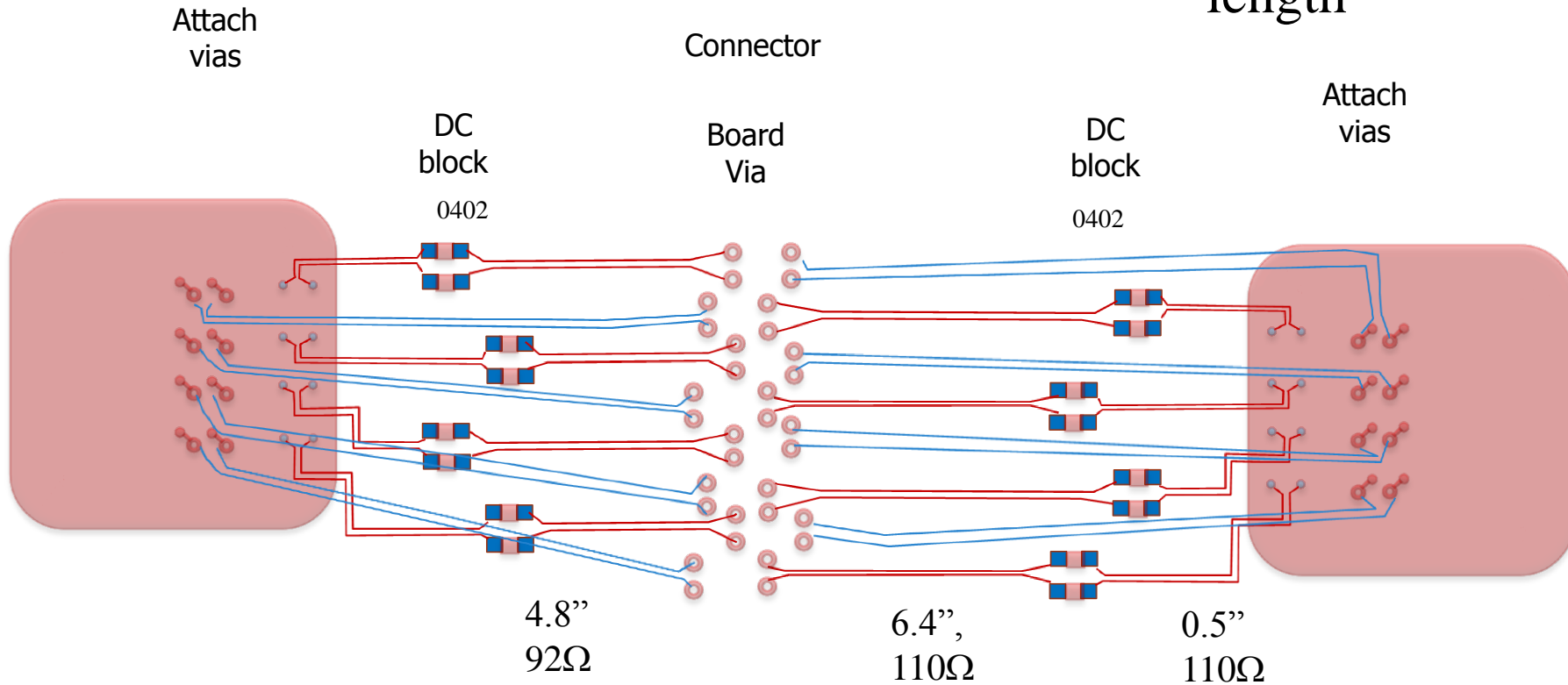


Differential IL and RL Responses and SBR



13.29dB Channel

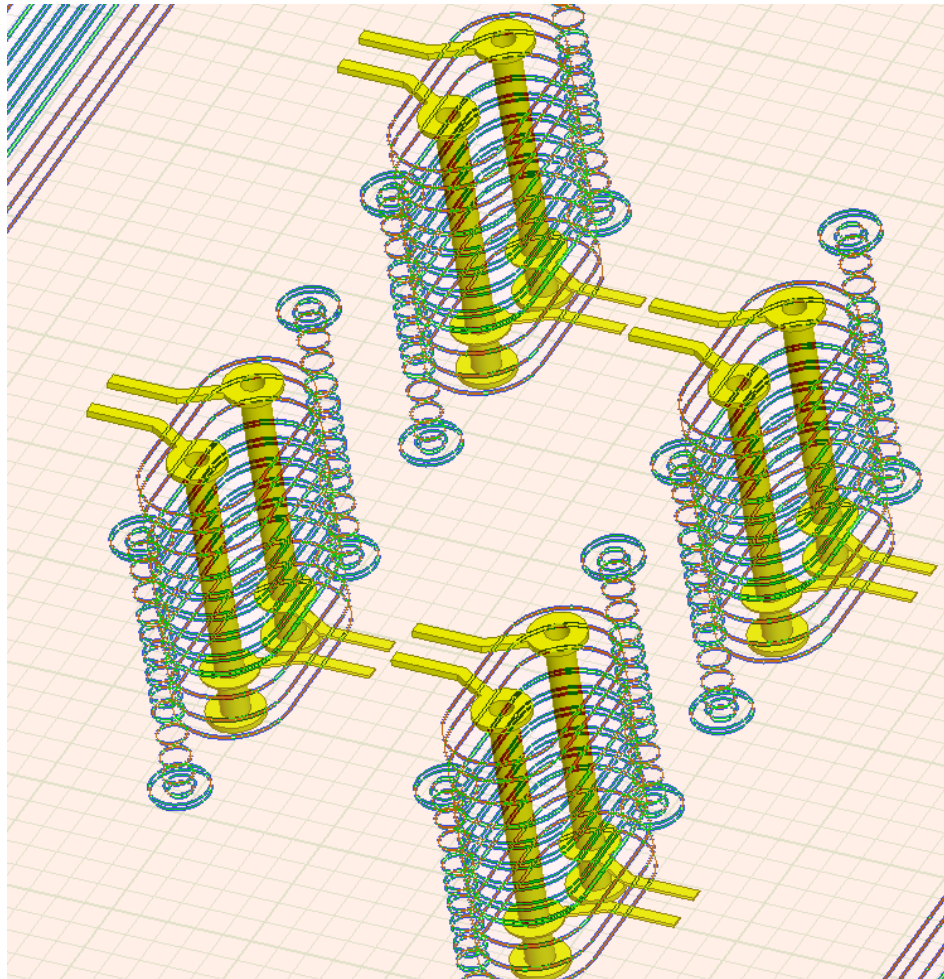
15 mils
max stub
length



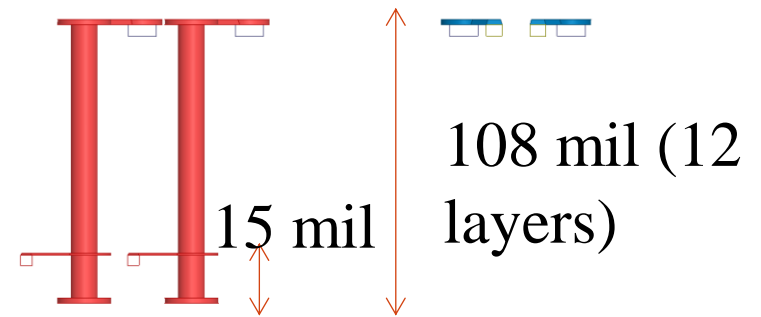
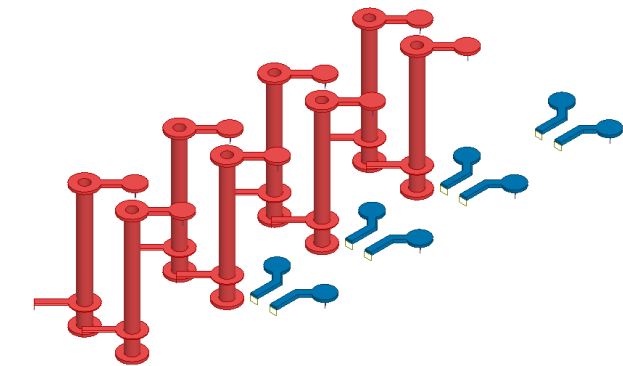
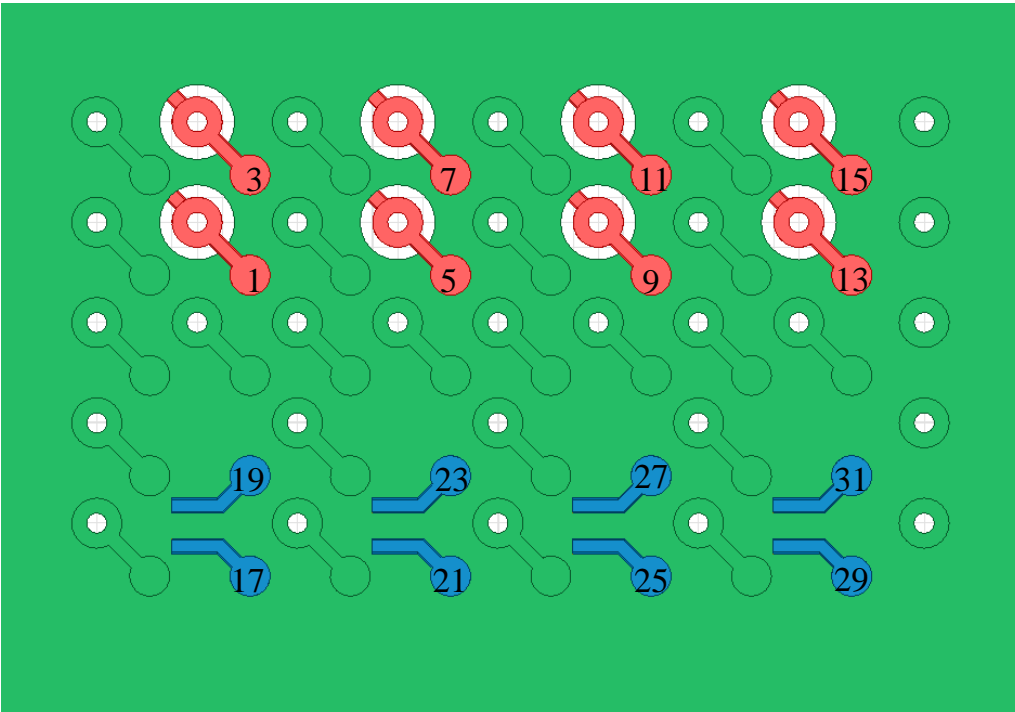
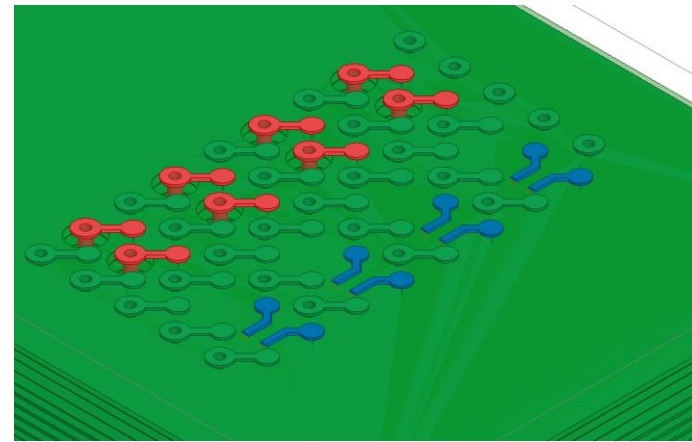
Board Material	Total Length	Loss at 12.9GHz
Meg6_LowSR_Narrow	11.45"	13.29dB

This is the simplest of designs of a 2 board design

Stubbed Via Model - 12 layer stack up 15 mil stub



BGA Attach Model



Mezzanine Connector Model

